

MAXX[®]

Mess- und Probenahmetechnik GmbH

Stationary Samplers



SP5 A

Model SP5 B

Technical data at a glance

Housing:	PE with 50 mm insulation/PS/PC (GF10)
Control:	Microprocessor control, foil keypad Option: LAN/GPRS-UMTS/Web communication 100 MB memory, (2 year ring memory FIFO at 1 min interval)
Interface:	Mini-USB, RS 232; optional: Ethernet RJ45, SDI-12
Communication:	Optional in combination with PC software, LAN/WLAN/TCP-IP
Signal inputs:	2 x analogue: 0/4-20 mA, 8 x digital (flow, event, 1 inputs can be programmed freely) Option: expandable with 4 x digital, 3 inputs can be programmed freely, and 8x analogue 0-20 mA or 0-10 V, Impuls length 60 ms, switching level 7-24 V, max. working resistance 500 Ohm, max. length of signal cable 30 m
Signal outputs:	8 digital outputs, 1x of them as collective malfunction message Option: expandable with 8 digital, 5 are freely programmable
Sampling method:	Peristaltic pump 20-10.000 ml/Vacuum 20-350 ml
Sampling modes:	Time (CT, CV), Flow (VT, CV) or (CT, VV), variable Flow only peristaltic pump or option for vacuum-system; Event, and Manual sampling (Flow modes are controlled by an external flowmeter signal)
Suction height:	max. 8 m (at 1.013 hPa), optional up to 15m
Bottle variants:	Plastic: 1 x 25 L; 4 x 14 L; 4 x 10 L; 12 x 2,9 L; 24 x 1 L; 24 x 1 L Glass: 12 x 2 L; 24 x 1L
Overall dimensions:	(hxwx d) 1.100 [1.640 with opened top] x 760 x 775 mm
Weight:	approx. 75 kg with composite container, higher weight when using several bottles and/or glass bottles
Ambient temperature:	-20°-50° C
Sample temperature:	0°-40° C
Standards:	CE, sampling according to ISO 5667-10, EN 16479



SP5 B – Compact device in plastic housing,
especially suitable for corrosive environment

Your advantages:

- > Available with peristaltic pump and vacuum system
- > Unrivalled measuring device for volume determination (Peristaltic pump)
- > Minimal effort für calibration
- > Highly accurate sample volume
- > Clear operating structure and simple programming
- > LAN/UMTS/GPRS Web communication (Option)
- > Easy cleaning
- > Modern and ergonomic design
- > Big variant of bottle configuration
- > Well insulated



Dosing system peristaltic pump



Model SP5 S

Technical data at a glance

Housing:	Stainless steel with 40 mm insulation (Material: 1.4301/SS304)/PS/C (GF 10) (Option: 1.4571/SS316Ti; SS304 or SS316Ti EPOXY coated)
Control:	Microprocessor control, foil keypad Option: LAN/GPRS-UMTS/WEB-communication 100 MB memory, (2 year ring memory FIFO at 1 min interval)
Interface:	Mini-USB, RS 232; optional: Ethernet RJ45, SDI-12
Communication:	optional in combination with PC software, LAN/WLAN /TCP-IP
Signal inputs:	2 x analogue: 0/4-20 mA, 8 x digital (flow, event, 1 inputs can be programmed freely) Option: expandable with 4 x digital, 3 inputs can be programmed freely, and 8 x analogue 0-20 mA or 0-10 V, impuls length 60 ms, switching level 7-24 V, max. working resistance 500 Ohm, max. length of signal cable 30 m
Signal outputs:	8 digital outputs, 1x of them as collective malfunction message Option: expandable with 8 digital, 5 are freely programmable
Sampling method:	Vacuum 20-350 ml /Peristaltic pump 20-10.000 ml
Sampling modes:	Time (CT, CV), Flow (VT, CV) or (CT, VV), (variable Flow only peristaltic pump or option for vacuum-system); Event and Manual sampling (Flow modes are controlled by an external flowmeter signal)
Suction height:	max. 8 m (at 1.013 hPa), optional up to 15m
Bottle variants:	Plastic: 1 x 25 L; 1 x 50 L; 2 x 10 L; 4 x 6 L; 4 x 10 L; 4 x 14 L; 12 x 2,9 L Glass: 12 x 2 L; 24 x 1L
Overall dimensions:	(h x w x d) 1.290 (1.890 with opened top) x 690 x 645 mm as measuring station: 1.470 (2.070 with opened top) x 690 x 645 mm
Weight:	approx. 100 kg with composite container, higher weight when using several bottles and/or glass bottles
Ambient temperature:	-20°-43° C
Sample temperature:	0°-40° C
Standards:	CE, sampling according to ISO 5667-10, EN 16479



Sampler in stainless steel housing. also available as measuring station

Your advantages:

- > Available with peristaltic pump and vacuum system
- > Unrivalled measuring device for volume determination (Peristaltic pump)
- > Minimal effort für calibration
- > Highly accurate sample volume
- > Clear operating structure and simple programming
- > LAN/UMTS/GPRS WEB- communication (Option)
- > Easy cleaning
- > Modern and ergonomic design
- > Big variant of bottle configuration and dosing systems



Fold-out plate for easy access and maintenance works



Vacuum dosing system with plastic vessel



Model SP5 A

Technical data at a glance

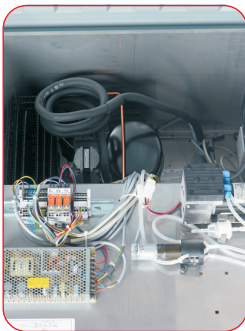
Housing:	Stainless steel with 40 mm insulation (Material: 1.4301/SS304)/PS/C (GF 10) (Option: 1.4571/SS316Ti; SS304 or SS316Ti EPOXY coated)
Control:	Microprocessor control, foil keypad Option: LAN/GPRS-UMTS/Web communication 100 MB memory, (2 year ring memory FIFO at 1 min interval)
Interface:	Mini-USB, RS 232; optional: Ethernet RJ45, SDI-12
Communication:	optional in combination with PC software, LAN/WLAN /TCP-IP
Signal inputs:	2 x analogue: 0/4-20 mA, 8 x digital (flow, event, 1 inputs can be programmed freely) Option: expandable with 4 x digital, 3 inputs can be programmed freely, and 8 x analogue 0-20 mA or 0-10 V, impuls length 60 ms, switching level 7-24 V, max. working resistance 500 Ohm, max. length of signal cable 30 m
Signal outputs:	8 digital outputs, 1x of them as collective malfunction message Option: expandable with 8 digital, 5 are freely programmable
Sampling method:	Vacuum 20-350 ml /Peristaltic pump 20-10.000 ml
Sampling modes:	Time (CT, CV), Flow (VT, CV) or (CT, VV), (variable Flow only peristaltic pump or option for vacuum-system); Event and Manual sampling (Flow modes are controlled by an external flowmeter signal)
Suction height:	max. 8 m (at 1.013 hPa), optional up to 15m
Bottle variants:	2 x 10 L PE/4 x 5 L PE/12 x 1,6 L Glas Duran 50/24 x 2 L Glas Duran 50
Overall dimensions:	(hwxwd) 1.290 (1.930 with opened top) x 690 x 645 mm 24 x 2 L: 1400 (2.175*) x 800 x 850 mm
Weight:	approx. 115 kg with 2x10 L, higher weight when using several bottles and/or glass bottles
Ambient temperature:	-20°-43° C
Sample temperature:	0°-40° C
Standards:	CE, sampling according to ISO 5667-10, EN 16479



Ideal for automatic and continuous operation without the need of personnel. Also available with measuring rack

Your advantages:

- > Available with peristaltic pump and vacuum system
- > Unrivalled measuring device for volume determination (Peristaltic pump)
- > Minimal effort für calibration
- > Highly accurate sample volume
- > Clear operating structure and simple programming
- > LAN/UMTS/GPRS Web communication (Option)
- > Easy cleaning
- > Modern and ergonomic design
- > Big variant of bottle configuration and dosing systems
- > Automatic bottle emptying
- > Automatic bottle rinsing



Easy access for connection and maintenance works



Distributor with glass bottles, placed on a telescopic drawer



Model SP Zone 1

Technical data at a glance

Housing:	Stainless steel with 40 mm insulation, (Material: 1.4301/SS304)/PS/C (GF 10) (Option: 1.4571/SS316Ti; SS304 or SS316Ti EPOXY coated)
Control:	Microprocessor control, foil keypad graphical display (128*64 Pixel), back lit
Programming:	12 freely programmable user programs, with function to link programs
Interface:	Mini-USB, RS232, (pay attention to ATEX certification)
Communication:	Optional: Modbus, Profibus DP (pay attention to ATEX certification)
Signal inputs:	2 x analogue: 0/4-20 mA, (galvanically separated) 8 x digital (flow, event, 1 inputs can be programmed freely)
Signal outputs:	8 digital outputs, 1x of them as collective malfunction message Option: expandable with 8 digital, 5 are freely programmable
Sampling method:	Vacuum-System 20–350 ml Optional: Vacuum-System 20–500 ml
Suction height:	max. 6 m (at 1.013 hPa),
Sampling modes:	Time (CT, CV), Flow (VT, CV), (option: [CT, VV] variable Flow) Event and Manual sampling
Bottle variants:	Plastic: 1 x 25 L; 1 x 50 L; 2 x 10 L; 4 x 6 L; 4 x 10 L; 4 x 14 L; 12 x 2,9 L Glass: 12 x 2 L
Overall dimensions:	(HxWxD) 1.400 (2.175*) x 800 x 850 mm * with opened top
Weight:	approx. 120 kg with composite container, higher weight when using several bottles and/or glass bottles
Ambient temperature:	-20°–43° C
Sample temperature:	0°–40° C
Standards:	CE, sampling according to ISO 5667-10, EN 16479



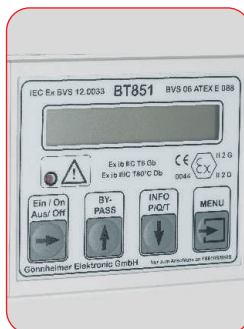
Ex-Zone 1,
Protection class II 2G Ex IIB T3 Gb X or
II 2G Ex IIB T4 Gb X without heating

Your advantages:

- > Proven MAXX technology for hazardous areas
- > Optionally with DK-system for pressure lines
- > Highly accurate sample volume
- > Clear operating structure and simple programming
- > Easy cleaning
- > Modern and ergonomic design



Pneumatic dosing system with capacitive Ex-sensor



Control housing in accordance with ATEX



Model SP Zone 2

Technical data at a glance

Housing:	Stainless steel with 40 mm insulation [Material: 1.4301/SS304]/PS/C (GF 10) [Option: 1.4571/SS316Ti; SS304 or SS316Ti EPOXY coated]
Control:	Microprocessor control, foil keypad, graphical display (128*64 Pixel), back lit
Programming:	12 freely programmable user programs, with function to link programs
Interface:	Mini-USB, RS232, [pay attention to ATEX certification]
Communication:	Optional: Modbus, Profibus DP [pay attention to ATEX certification]
Signal inputs:	2 x analogue: 0/4–20 mA, [galvanically separated] 8 x digital (flow, event, 1 inputs can be programmed freely)
Signal outputs:	8 digital outputs, 1x of them as collective malfunction message option: expandable with 8 digital, 5 are freely programmable
Sampling method:	Vacuum-System 20–350 ml Optional: Vacuum-System 20–500 ml
Suction height:	max. 6 m [at 1.013 hPa],
Sampling modes:	Time (CT, CV), Flow (VT, CV), [option: (CT, VW) variable Flow] Event and Manual sampling
Bottle variants:	Plastic: 1 x 25 L; 1 x 50 L; 2 x 10 L; 4 x 6 L; 4 x 10 L; 4 x 14 L; 12 x 2,9 L Glass: 12 x 2 L
Overall dimensions:	(HxWxD) 1.470 (2.245*) x 690 x 645 mm * with opened top
Weight:	approx. 120 kg with composite container, higher weight when using several bottles and/or glass bottles
Ambient temperature:	-20°–43° C
Sample temperature:	0°–40° C
Standards:	CE, sampling according to ISO 5667-10, EN 16479



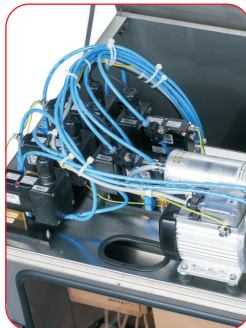
Sampler in stainless steel housing
for hazardous areas of Zone II
Explosion protection class: II 3D EEX nC/R/L IIB T3

Your advantages:

- > Proven MAXX technology for hazardous areas
- > Optionally with DK-system for pressure lines
- > Highly accurate sample volume
- > Clear operating structure and simple programming
- > Easy cleaning
- > Modern and ergonomic design



Pneumatic distributor and heating according to ATEX



Fold-out plate with Ex-valves and diaphragm vacuum Ex-pump



Model SP5 DK

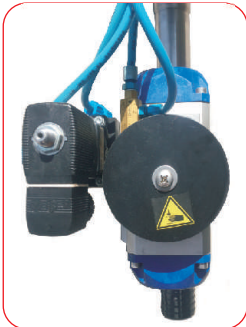
Technical data at a glance

Housing:	Version without housing (PVC/stainless steel) Option: Stainless steel housing with cooling/heating ; (material: 1.4301/SS304)/ PS/C (GF 10) /1.4571/SS316Ti; SS304 or SS316Ti EPOXY coated)
Control:	Microprocessor control, foil keypad Option: LAN/GPRS-UMTS/Web communication 100 MB memory, (2 year ring memory FIFO at 1 min interval)
Programming:	12 freely programmable user programs, with function to link programs
Interface:	Mini-USB, RS 232; optional: Ethernet RJ45, SDI-12
Communication:	optional: Modbus, Profibus DP, PC software, LAN/WLAN /TCP-IP
Signal inputs:	2 x analogue: 0/4-20 mA, 8 x digital (flow, event, 1 inputs can be programmed freely) option: expandable with 4 x digital, 3 inputs can be programmed freely, and 8 x analogue 0-20 mA or 0-10 V, impuls length 60 ms, switching level 7-24 V max. working resistance 500 Ohm, max. length of signal cable 30 m
Signal outputs:	8 digital outputs, 1x of them as collective malfunction message Option: expandable with 8 digital, 5 are freely programmable
Sampling method:	Double ball valve system with dosing tube mounted between the two valves. Fixed volume as specified, between 25 and 500 ml, up to 25 bar
Sampling modes:	Time (CT, CV), Flow (VT, CV), Event and Manual sampling
Bottle variants:	1 x 25 L PE in stainless steel housing: 1 x 25 L; 4 x14 L; 4 x 6,3 L; 12 x 2,9 L
Overall dimensions:	Wall-mounted version: control unit (hxwx) 350 x 450 x 170 mm dosing unit (hxwx) 570 x 120 x 200 mm version in stainless steel housing (hxwx): 1.470 (2.245*) x 690 x 645 mm [* with opened top]
Weight:	approx. 15 kg (wall-mounted version); approx. 100 kg (version with stainless steel housing)
Ambient temperature:	0° bis +45° C
Sample temperature:	0° bis +40° C
Standards:	CE

Wall-mounted device for sampling of sludge and from pressurised lines up to 25 bar

Your advantages:

- > Almost no »dead-volume« because of purging
- > For sample medium with high solids content (Sludge)
- > Can also be used for non-conductive liquids, such as e.g. oil
- > Device can also be combined with thermostatic sampling cabinet
- > LAN/UMTS/GPRS Web communication (Option)
- > For high pressure up to 25 bar
- > Clear operating structure and simple programming
- > Easy cleaning



Automatic protection device, interlocking



Pressure-resistant ball valve

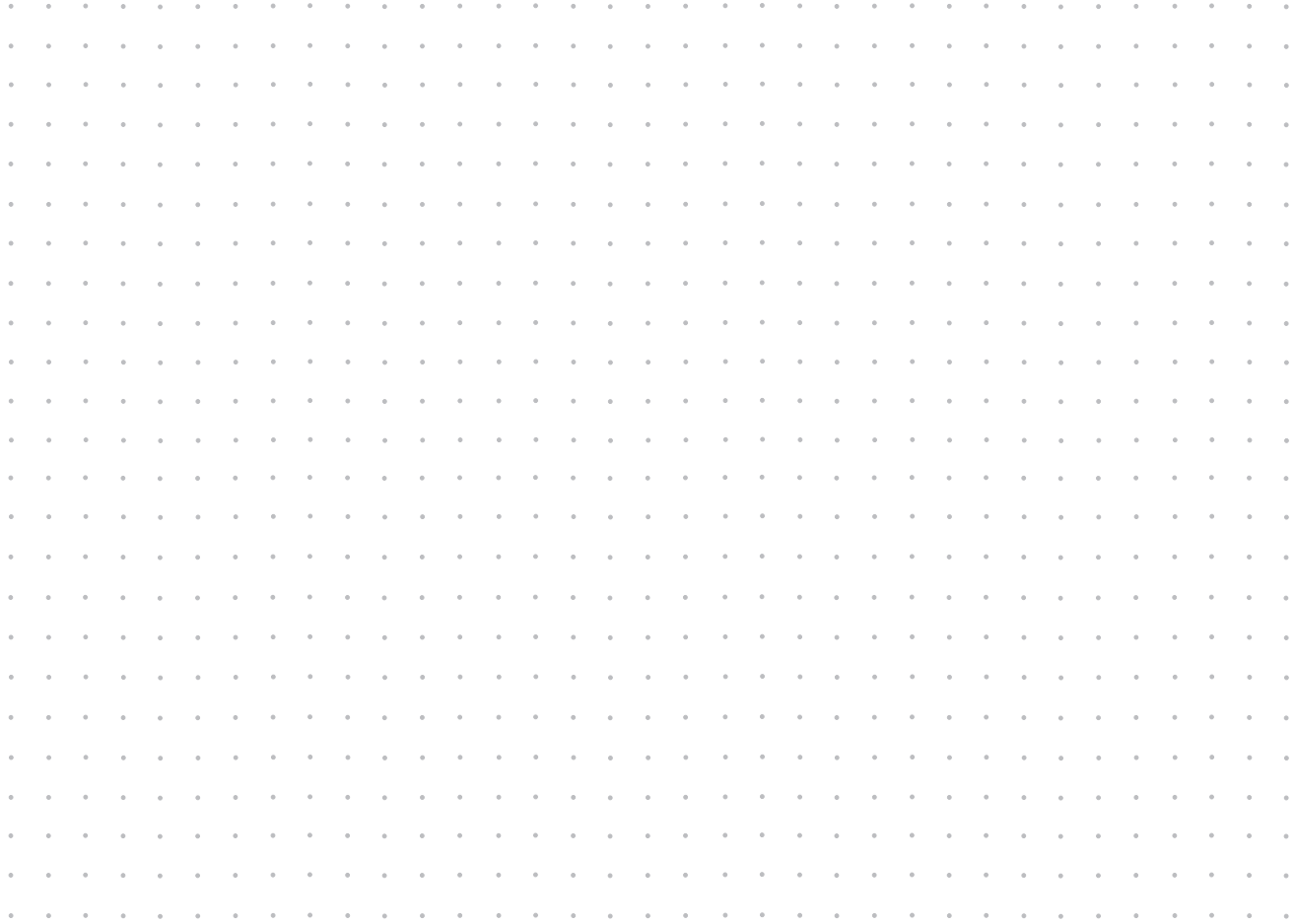


Your Notes



MAXX ®

Mess- und Probenahmetechnik GmbH





top innovator
2016

MAXX 

Mess- und Probenahmetechnik GmbH

MAXX GmbH
Hechinger Straße 41
72414 Rangendingen, Germany

Phone +49 (0)7471 98481 0
Fax +49 (0)7471 9848144

www.maxx-gmbh.com
info@maxx-gmbh.com



Baden-Württemberg

 Innovation made in Germany